

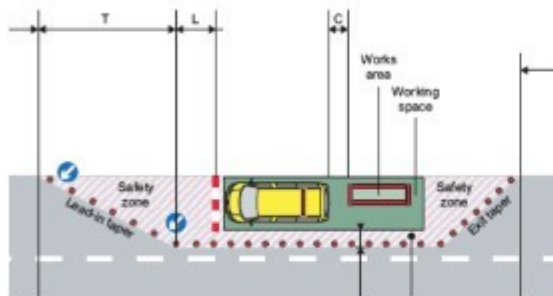
Guidance Bulletin 40

Close The Gap! Replacing Safety Zones



The nature of our works and the processes we operate to often mean several vehicle and plant movements are made on any site. To undertake these movements, we often have to move cones and barriers to enable access or exit from a site. If the cones in the sideways safety zone have to be moved, make sure that any gap is closed as soon as possible.

The **maximum** gap between cones in the sideways safety zone is **9m** or 28ft.



DO's & DON'Ts

- DO** make sure you install all the safety zones if required.
- DO** replace any moved cones back in position remembering the maximum 9m spacing for sideways safety zones
- DO** check your site before you leave to ensure all cones are replaced and in the correct spacing / position
- DON'T** move cones in the safety zones unless necessary
- DON'T** leave site without replacing the sideways safety zone



**GAP LEFT AFTER
VEHICLE MOVEMENT**

HAUC(UK) thanks M Group Water in their help in the creation of this guidance.



IF YOU ARE IN ANY DOUBT, CONTACT YOUR SUPERVISOR FOR FURTHER ADVICE

DO HIGHWAYS THE RIGHTWAYS